



Cindy Kelley,  
Executive Director

## Intercultural Student Experiences

▶▶▶ A nonprofit educational organization since 1972

### Executive Director Notes

#### Points of interest:

- ISE and GCN moved!
- Highlights from the strategic plan
- New Alliance Staff
- Student article from Panama Program
- Educator only programming in 2011

#### Inside this issue:

Executive Director Notes	1
Teacher Only Educator Exploration	2
From the Airline Coordinator	3
New GCN/ISE Alliance Staff	4
Inspiring Students of the World	5
ISE Staff and Board	6

The summer has been very busy filled with change for ISE staff. In late July, we moved to our new space in downtown Minneapolis. The process of building our space began more than a year ago as we spent time discussing our organizational values as well as the practical needs of doing our work day-to-day. From our staff we heard the need for lots of natural light, creative space, meeting space, and an emphasis on green living with environmentally friendly building materials and changes in how we use our resources.

We re-used all the lighting originally found in the space. We installed low VOC carpet and used low VOC paint. The counter tops in the kitchen and in the bathroom are ground, recycled glass (a very cool look). We do not use paper towels in the bathroom, rather we use an energy efficient hand dryer. Our bathroom is actually a locker room with a wheelchair accessible shower and low flow toilet. Lights in our kitchen and locker room turn on and off automatically to

reduce energy costs. And, we found old school lockers at an antique store; had them repainted and then repurposed them for storage in and outside the locker room.

The other very exciting news is that, in August, the board of directors approved the ISE and GCN alliance's new strategic plan. The plan outlines our organizations' direction for the next three years. Our plan incorporates four primary goals.

1. Grow the network of stakeholders committed to the success of GCN and ISE programs.
2. Increase the number of people with intercultural awareness and competence around the world in a financially sustainable way.
3. Create new/refined models for intercultural learning and international development partnerships.
4. Achieve national and local recognition for advancing intercultural learning and international development through synergistic partnerships.

As the staff begins to implement the goals of the strategic plan over the next year, I will share detail with you about how our work supports the ISE mission: *To inspire and educate students of the world through experiential learning across cultures.*

Amazingly, the board and staff are beginning preliminary conversations about the celebration of *ISE's 40th anniversary in 2012!* I am very proud of our nearly forty years of work on behalf of students and teachers and our commitment to support learning a world language. It is exciting to think about what the next four decades might bring to ISE and our world. When we started operations in 1972, women's liberation was a new concept for many, there were no cell phones and no email, and jet travel was not something very many U.S. Americans had experienced. I wonder what will come next?

Seeing the World in Many Layers,  
*Cindy Murphy Kelley*

## Teacher Only Educator Exploration: Mexico and Morocco!



Educators with the Mendoza family weavers.

The first Educator Exploration

Program to Oaxaca, Mexico was a huge success in 2010! This summer, I had the privilege of participating on this program with 8 outstanding high school Spanish language educators. Long-time ISE Staff Guide, Cliff Hinderman, was our expert guide. We were able to explore the Casa Azul and Diego Rivera Museum in Mexico City. In and around Oaxaca, we met and engaged various artisans at the Ocotlan Market, in San Bartolo Coyotpec (Black pottery), San Martin Tilcajete (Alebríjes), Tule, Mitla, and even learned how to make molé and other Mexican cuisine at Seasons of My Heart Cooking School. Participants lived with families in Oaxaca during that part of the program, offering a great opportunity to speak Spanish and gain perspective on family life in Oaxaca.

As many of you know, ISE has had a special relationship with Centro de Esperanza Infantil in Oaxaca for many years. We continue to have teachers and staff that sponsor students as they work towards their educational

goals with the support of the center. We had the opportunity to meet some of the families and students that benefit from the center and the experience was a true inspiration. Two graduate level credits were offered for this program and we now have an on-going relationship with Hamline University's School of Education to continue providing graduate level credits for ISE Educator Exploration Programming. We will proudly be offering the Educator program in Oaxaca again in 2011 with Cliff Hinderman guiding the experience.

In addition, we will be providing a new program to Morocco in 2011 for French language educators!

Anca Coleman and Jana Stow spent two weeks in Morocco this past spring researching and evaluating the viability of an Educator program to Morocco. The result is our new program: **"French Encounter in the**

**Four Imperial Cities of Morocco."** We are offering an amazing opportunity to explore francophone culture in Morocco - including family stays for participants. Educators will learn about historical and modern cultural and economic factors that impact the day to day lives of Moroccans. Participants will be able to share their understanding of how historical, cultural and economic forces impact the policies of education.

To get more information about the Oaxaca Educator program, contact Tracy Tomberlin ([tracy@isemn.org](mailto:tracy@isemn.org))

To get more information about the first ever ISE Educator program to Morocco, contact Anca Coleman ([anca@isemn.org](mailto:anca@isemn.org)).

You can also call 800.892.0022 to speak with them in person.

Happy fall!

-Tanya Gajewski,  
Director of Education

---

**"...the program exceeded my expectations. The days were packed with tremendous learning activities and sequenced with delightful people. "**  
- participant on Educator program to Oaxaca, 2010

---



Anca Coleman and Jana Stow and smiling camel in Morocco.

## From the Airline Coordinator



Debby Bluem,  
Airline Coordinator

### CHOICES AND CHANGES

We all love choices. “Have it your way” says an old Burger King slogan. Unfortunately, today’s airline industry is more like the old Rolling Stone’s song, “(I Can’t Get No) Satisfaction.” We spend a lot of money on airline tickets, so we would like to think that we can always get the dates, flight schedule, price and even seat assignment of our choice. Since price is usually the number one factor when putting together a program with ISE, here are some things to keep in mind:

On **published programs**, ISE chooses the dates, routing and airline. We can try to accommodate special requests, but this often results in higher costs to your group. **Custom programs** can also end up with high air prices due to requests for specific dates, flights and/or air-

lines.

**Be flexible.** The more choices you offer increases the chance that you will get good prices and good flights. Examples: If you must have a non-stop flight or if you insist on flying a specific airline or specific dates, be prepared to pay more. If you only want to leave from Green Bay and won’t consider Milwaukee or O’Hare, or you insist on flying into Toulon and won’t consider Nice or Marseille, your group will likely end up with much higher ticket prices and add-ons. To keep the price down, be willing to compromise. A different date, an extra stop, a long or short layover or alternate city choices can make a big difference!

**Plan ahead.** The best flight schedules and lowest ticket prices can sell out 11 months in advance, especially over popular spring break and summer dates.

**Avoid changes.** Once your flights are confirmed, it can be very expensive to make changes to your flight itinerary. Often the original reservation cannot be changed, so the flights may need to be cancelled and rebooked at the current price with possible

change fees invoked by the airlines. To avoid additional air costs, choose your itinerary wisely.

100% satisfaction with flight scenarios is rare. Compromise and trade-offs are often necessary. Even the best plans can unravel with schedule changes or flight cancellations. Nothing is guaranteed, especially when it comes to the airline industry. So be flexible. Expect change.

Happy flying!

Debby Bluem,  
Airline Specialist




---

**“If you must have a non-stop flight or if you insist on flying a specific airline or specific dates, be prepared to pay more.”**

---

**SAVE THE DATE!**  
**ISE TEACHER WORKSHOP 2011**  
**JANUARY 28-30**  
**EMBASSY SUITES**  
**BLOOMINGTON, MINNESOTA**

**Invitations will be sent to 2011 teacher/leader program participants in November so watch your email!**



Photos from the ISE Teacher Workshop, 2010

## New GCN/ISE Alliance Staff: Erin McGillivray



Erin McGillivray with Chirapa youth on her first GCN program to Peru, summer 2010.

ISE greatly contributes to making the world a better place for all of us. Already, I am inspired by the commitment of the different types of volunteers who support ISE. From Family Stay Coordinators, U.S. Hosting Program families, and Staff Guides, to interns, teachers and board members – our

diverse volunteers play a key role in inspiring and educating students of the world. I would like to share a snapshot of volunteer contributions and milestones over the last year:

- 50 teachers volunteered to coordinate and place hundreds of students from abroad with engaged and generous families around the U.S. as part of our U.S. Hosting Program.
- ISE's *first* volunteer intern, Sonya Brauchle, came back for a third season to work on new program research, enabling us to develop and launch our program in Ecuador.
- Formerly a teacher traveling with ISE and now ISE Family Stay Coordinator, Elaine Benson, generously hosted training for ISE Family Stay Coordinators and our Costa Rican partner organi-

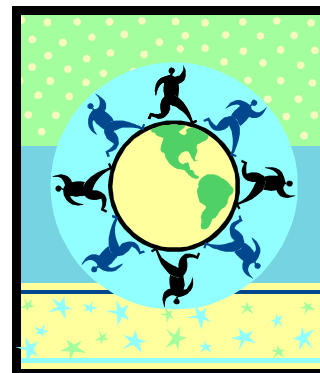
zation at her home in Costa Rica.

- The number of students from France, Germany and Spain U.S. Hosting Program increased this year by 34% from 2009. These students stayed with 319 volunteer host families.
- 149 teachers and program leaders voluntarily participated in the 2010 Teacher Workshop in Bloomington, Minnesota to plan for a great program abroad with their students.
- In 2010 we had 6 Staff Guides volunteer their time and expertise for ISE programs abroad.

If you are interested in volunteering to inspire students of the world by hosting a student from abroad or in other ways, contact me: [erin@isemn.org](mailto:erin@isemn.org) or call 800.892.0022 to speak with me in person.

I wish you all a fantastic school year!

-Erin McGillivray




---

**“Having the student in my home this summer encouraged me to go ahead with my Master’s degree in ESL/Bilingual Education.”**  
**- Host Family Parent Volunteer**

---

Greetings from GCN/ISE!

I am excited to join the GCN/ISE team as the new Resource Development Coordinator. As an alliance staff member, I look forward to partnering with both GCN and ISE volunteers and supporters to achieve our shared outcome of increasing cross cultural understanding and global cooperation.

As a nonprofit organization, we at ISE count on volunteers who give energy, time, and effort. We could not advance our mission without the support of teachers, host families, interns and other stakeholders who volunteer their time and expertise. Our worldwide partnerships make it possible for thousands of students and their educators to benefit from authentic immersion experiences every year. Volunteering with

## Inspiring Students of the World: Panama!

When thinking back on my trip to Panama, I can come to appreciate everything that I encountered. There are so many things that I could talk about from just two weeks, but I know that my stay with my family was the most important. Never had I been so challenged in my life. Spanish was always something that I found to be easy, and I knew how to handle the situation from my past experiences in Peru; but I was wrong! My family spoke no English except a few words here and there to get them by. They would sit me down at the kitchen table and just talk. It became mentally exhausting from day to

day. I appreciated the times when I would go to bed because I knew that I could relax; plus I was able to think in English! Through all of this, I finally realized what I wanted to get out of it. I knew that I would never become fluent without taking the time to become exhausted. As terrifying as that sounded, I went for it! Not only did my Spanish improve, but I learned so much more about the lives of these people. How they could just sit for three hours and have a conversation, not debating the productivity of it. I felt like I was

really a part of their family, and they considered me a part of theirs. They were the most welcoming people I had ever met, and I never would have known if I didn't engage myself in the Spanish language. Overall, the experiences from my trip taught me to be an individual who puts everything into what they are doing. And that statement holds true today as I continue to further my skills in the Spanish language.

- Submitted by 2010 Panama program participant, James Jagger



James Jagger with his host family in Panama, 2010.

## Thank You U.S. Hosting Program Coordinators!

To all of the volunteer teachers and coordinators who help to place hundreds of students from abroad with engaged and generous families around the U.S. — THANK YOU!

Sarah Adams, MO  
Anne Adasiak-Andrew, AS  
Meena Akhavan, WA  
Anthony Alvarez, MO  
Dave Bebeau, MI  
Andrea Behn, WI  
Angie Bruner, WI  
Brenda Bush, OH  
Jessi Clayton, WA  
Françoise Deeg, LeGal—WA  
Mauri Deer, MN  
Jane Ditewig, WA

John Fitzer, MN  
Sheryl Foster, MI  
Peggy Guetzko, IA  
Tom Halloran, MN  
Laurie Hennen, MN  
Aaron Hido, OH  
Aline Hopkins, AS  
Sally Huck, WI  
Becky Koeller, MO  
Barb Koester, MN  
Cathy Korwin, IL  
Michelle Kutz, WI  
Kim Lackey, MO  
Jeanine LeMieux, MI  
Beth Lillskau, IA  
Leona Lipinski, WI  
Cathy Longcore, MI  
Julia Lopiccio, MI  
Cindy Mendez, MN

Paula Meyer, WI  
Sonya Morrison, WA  
Becky Moulton, MI  
Gina Muller, MO  
Denise Pahl, MO  
Julia Price, WI  
Brooke Russell, MI  
Janel Schiferli, MN  
Shawn Sinacola, MI  
Amy Stephens, MO  
Kari Stevenson, MN  
Kimberly Summers, IN  
Jason Swanson, MN  
Sandy Szvedo, WI  
Nicole Trujillo, MN  
Jeanne Weber, MO  
Deanna Willems, WI  
Virginia Wiltbank, OR  
Mary Clair Wissman, MI

---

**“Me gustó mucho!”**  
**“ Panama was amazing and so was the Spanish immersion.”**  
**- 2 Students**  
**opinions on the ISE Panama program, 2010.**

---



Non-profit Org.  
US Postage  
**PAID**  
Hopkins, MN  
Permit No. 445

Intercultural Student Experiences  
129 North 2nd St.  
#102  
Minneapolis, MN 55401

Phone: 800.892.0022  
Fax: 612.436.8298

**Immersion Programs**  
that *Inspire!*

We're on the Web!  
[www.isemn.org](http://www.isemn.org)

## ISE Staff

Cindy Murphy Kelley, Executive Director  
Tanya Gajewski, Director of Education  
Katharina Schirg, Director of Operations  
Jennifer Beattie-Cramer, Director of Program Development  
Tracy Tomberlin, Latin America & U.S. Hosting  
Anca Coleman, France, Switzerland & U.S. Hosting  
Holly Kuisle, China, France, Quebec & U.S. Hosting  
Jana Stow, Austria, Germany & U.S. Hosting  
Kristi Mueller, Spain & U.S. Hosting  
Erin McGillivray, Resource Development Coordinator  
Courtney Faragher, Registrar  
Debby Bluem, Airline Coordinator  
Keely Lind, Office Coordinator

## ISE Board Members

B.J. Anderson  
Karen Brown  
Paul Ernst  
Thomas Goodman  
Rita Johnson  
Jeff Sommers  
Monica Vickman Ballard  
Peter Wagner  
Wayne Wilson  
Sam Zordich